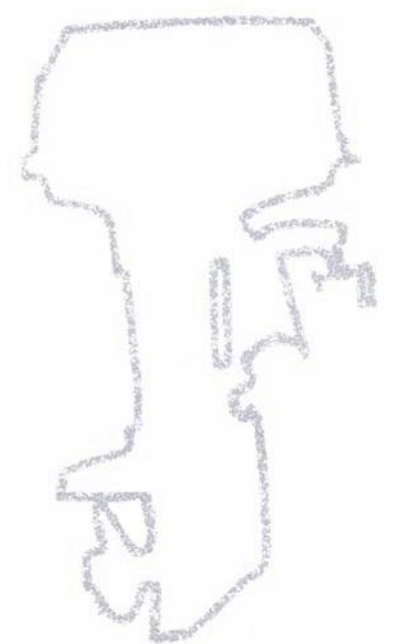


舷外机产品图册

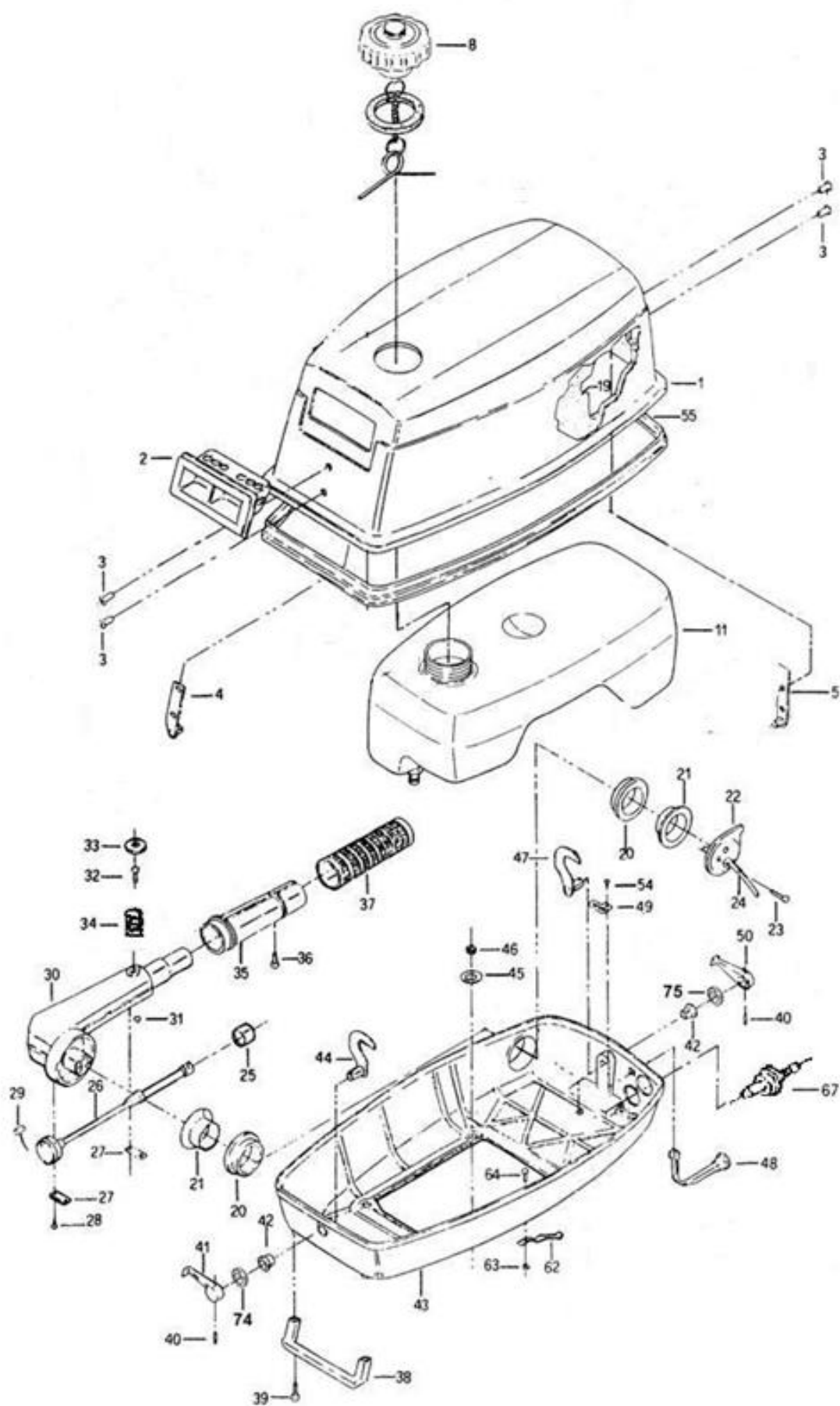
OUTBOARD ENGINE COMPONENTS LIST

ZST4/5/6HP

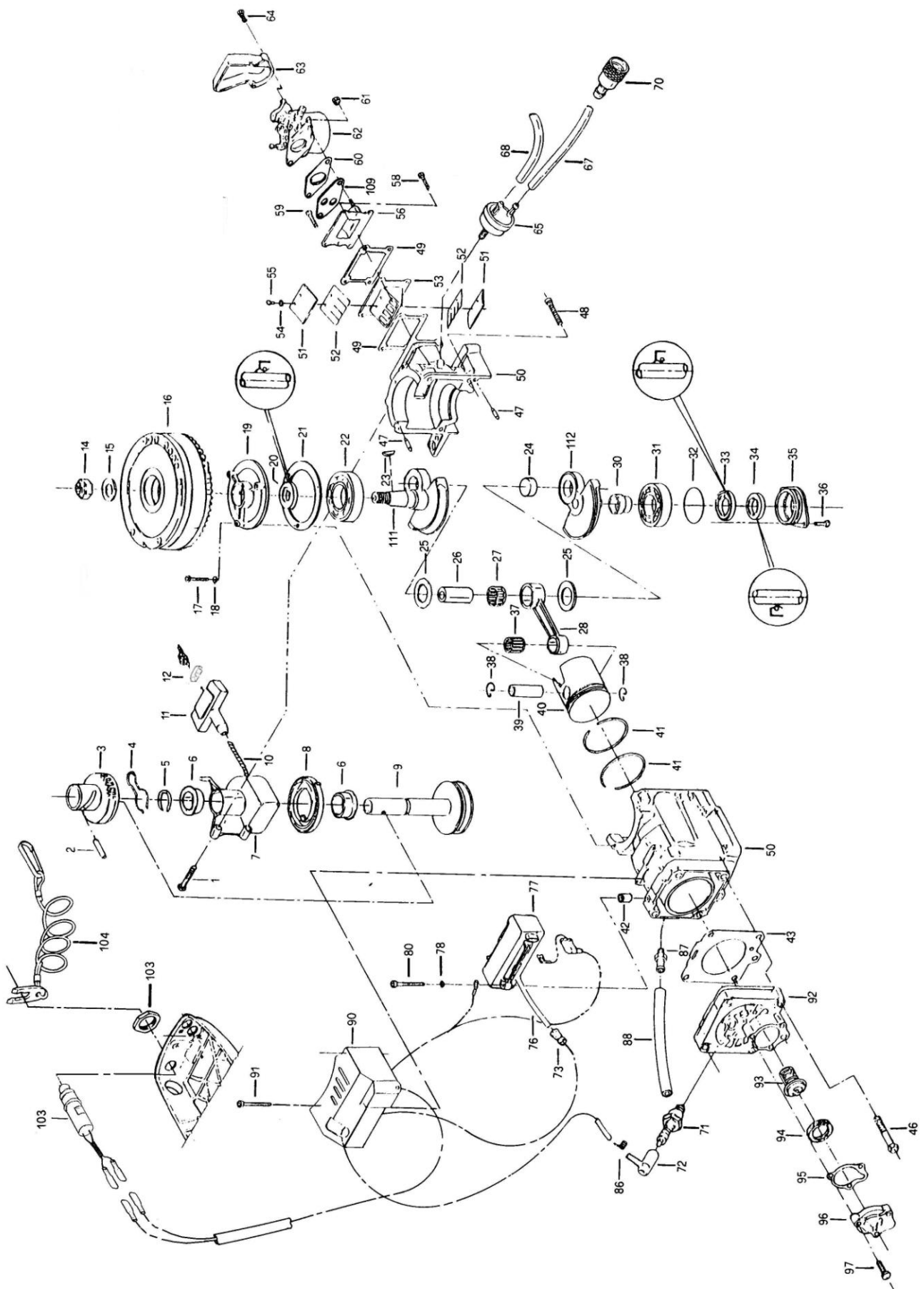


MODEL	T4	T5	T6
POWER	4HP/2.94kW	5HP/3.7kW	6HP/4.4KW
FULL THROTTLE RANGE	5000/5500 rpm		
PISTON DISPLACEMENT	85 cc	123 cc	
BORE X STROKE	49×45 mm	56×50 mm	
NOMBER OF CYLINDER	1		
ENGINE TYPE	Cycle eight 2 stroke		
FUEL PUMP	N° 1 membrane pump		
AVERAGE CONSUMPTION	1.5 litres / hour	2 litres / hour	
FUEL	mixture of 2 % petrol with "ZONGSHEN-SELVA OUTBOARD MOTOR OIL - TC WII - oil		
FUEL TANK	separated lt. 12 (incorporated lt. 1.7)		
RECOMMENDED ENGINE OIL	Oil " ZONGSHEN-SELVA OUTBOARD MOTOR OIL "		
IGNITION	Electronic nautical with capacitive discharge		
SPARK LEAD	Electronic automatic programmed with the engine revolutions		
MANUAL STARTING	Manual with rope, which returns automatically on the pulley		
SPARK PLUGS	Bosch W7BC + Champion L87Y - Lodge H - heat range 175		
EXHAUST	sub-marine depression-working through the propeller-hub		
COOLING	water cooling with forced circulation caused by a pump		
PROPELLER REDUCTION RATIO	13/30		
GEAR SHIFT LEVER	forward gear - neutral gear - reverse gear(shaft rotation of 360°)		
RECOMMENDED GEARBOX OIL	" ZONGSHEN-SELVA OUTBOARD MOTOR GEARBOX OIL " 80/90W(API GL-5		
GEARBOX OIL QUANTITY	220 cc. / 200 gr.		
PROPELLER TYPE	anti-weed with three blades		
TRIM ANGLE ADJUSTING	5 positions, which you can select through pin		
SUSPENSIONS	anti vibrations annular shock-absorber		

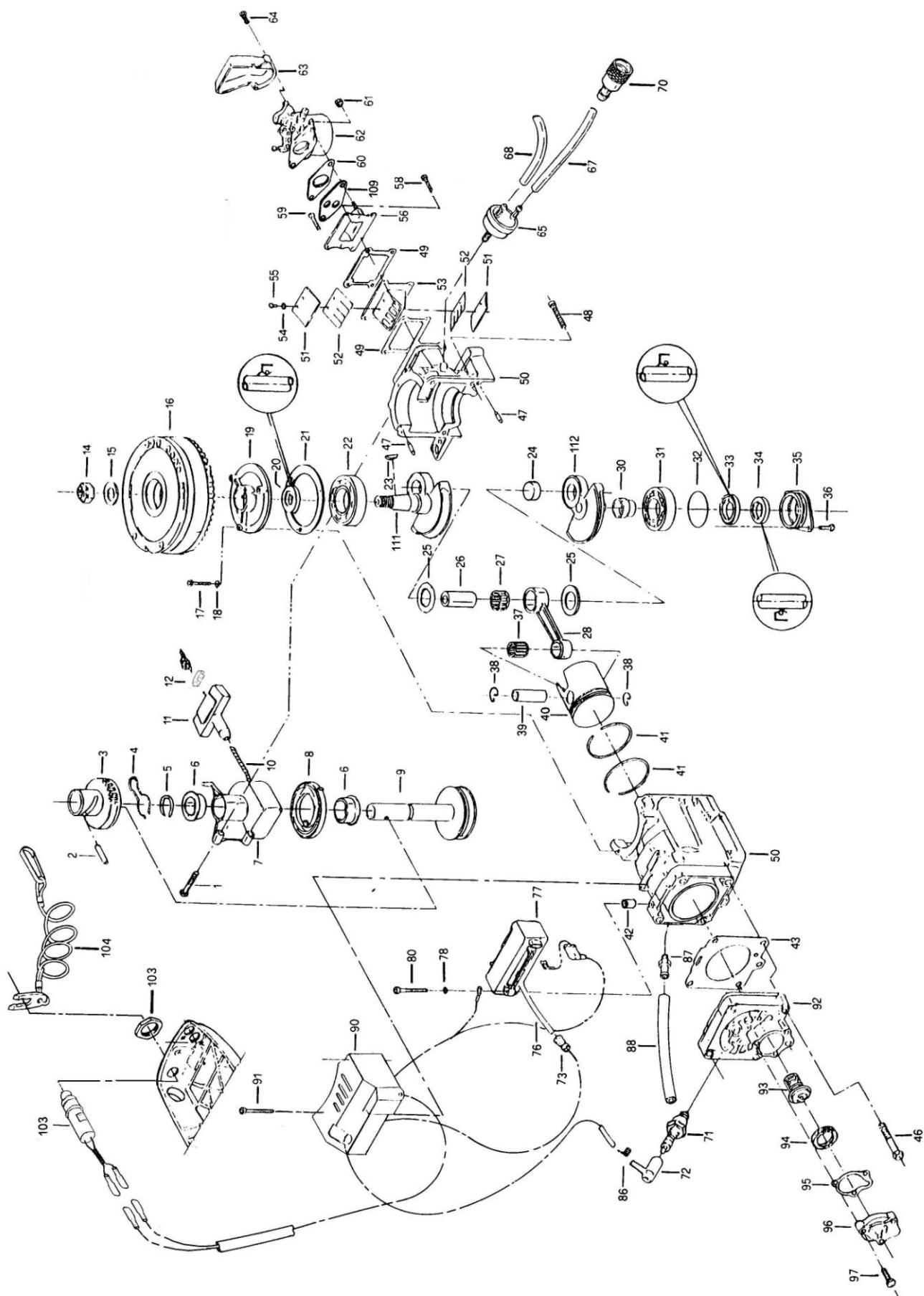
MODEL		T4	T5	T6
HEIGHT OF THE TRANSOMS		Standard shaft 380 mm - long shaft 510 mm		
WEIGHT	STANDARD SHAFT	19kg	20kg	
	LONG SHAFT	20kg	21kg	



序号	Selva 编码	零部件编码	零部件名称	数量	英文名称
1		08001-I07-0000	顶罩本体	1	
2	8020105	08002-D05-0000	顶罩提扣	1	Motor lift handle
3	7065100	B1261801050100J00	抽芯铆钉 GB/T 12618.1 5×10	4	Rivet
4	1598340	08010-I07-0000	后挂钩销组件	1	Support with roll for back hook
5	1598336	08020-I07-0000	前挂钩销组件	1	Support with roll for front hook
8		05810-I07-0000	油箱盖组件	1	Gasket cap
11		05800-I07-0000	油箱组合	1	Fuel tank
20	8045020	13001-D30-0000	手把减震	2	Shock absorber sreering handle
21	8030030	13002-D30-0000	手柄衬套	2	Bushing steering handle
22	2065050	13002-I07-0000	操纵柄	1	Handgrip flange
23	4005050	B057830006001670U	螺栓 GB/T 5783 M6×16-8.8-达克罗	2	Screw TE M6x16
25	8030040	13008-D30-0000	衬套	1	Bushing
26	8015290	13007-D30-0000	油门转轴	1	Pulley
27	9005030	13006-D30-0000	油门杆衬板	2	Pulley plate
28	4505020	B0084500039013A00	自攻螺钉 GB/T 845 ST3.9×13	4	Screw ϕ 3.9x13 inox
29	1599050	13001-I07-0000	油门线组件	1	Accelerator wire
30	2065040	13016-D30-0000	操舵手柄	1	Handgrip body
31	9005020	13004-D30-0000	螺栓园钮	1	Clutch pad
32	4005060	B057830006001670U	螺栓 GB/T 5783 M6×16-8.8-达克罗	1	Screw TE M6xl 6
33	8020060	13003-D30-0000	螺栓帽	1	Pomello vite frizione
34		13028-D30-0000	弹簧		spring
35	8020040	13011A-D30-0000	手把握把	1	Handgnp core
36	4040041	B000650005001670U	螺钉 GB/T 65 M5×16-8.8-达克罗	1	Screw TCI M5x16
37	8020051	13011B-D30-0000	手把握把套	1	Handgrip
38	2065030	09005-D30-0000	搬运手柄	1	Back hangrip
39	4015540	B0007001060012000	螺钉 GB/T 70.1 M6×12-A4-70	2	Screw TCEI M6x12
40	5555060	B0087901040020000	销879 (ϕ 4×20)	2	Elastic pin diam. 4x20
41	8015020	09004-I07-0000	后挂钩手柄	1	Back hook lever
42	8030050	09002-I07-0000	衬套(ϕ 10×ϕ 12.5×ϕ 15.5×2×13)	2	Hook bushing
43	2055262	09001-I07-0000	底罩	1	Basin
44	1598380	09010-I07-0000	后挂钩组件	1	Back hook
46	5050010	B008890006000000	螺母 M6自锁	4	Self locking nut
47	1599000	09020-I07-0000	前挂钩组件	1	Front hook
48	8015130	05021-I07-0000	阻风门拉杆	1	Choke rod
49		05022-I07-0000	阻风门拉头	1	Choke rod
50	8015030	09009-I07-0000	前挂钩手柄		Front hook lever
54	4505010	B0084500039095A00	螺钉 GB/T 845 ST3.9×9.5-A2-25H	1	Screw ϕ 3.9x9.5 inox
55	8010030	09032-I07-0000	胶条	1	Hood-basin gasket
62	5590060	13105-I07-0000	档位限位簧片	1	Spring, gear selector
63	5050540	B008890005000000	螺母 M5自锁	1	Lock nut
64	4005090	B0578300050012000	螺栓 GB/T 5783 M5×12- A4-70	1	Vite TE M5x12
67		05610-C96-0000	接机端燃油接头		Fuel joint
74	9025091	09031-I07-0000	垫圈(ϕ 10×ϕ 15×1.5)	1	Washer
75	9025085	09003-I07-0000	垫片(ϕ 10×ϕ 15×1.0)	1	Washer

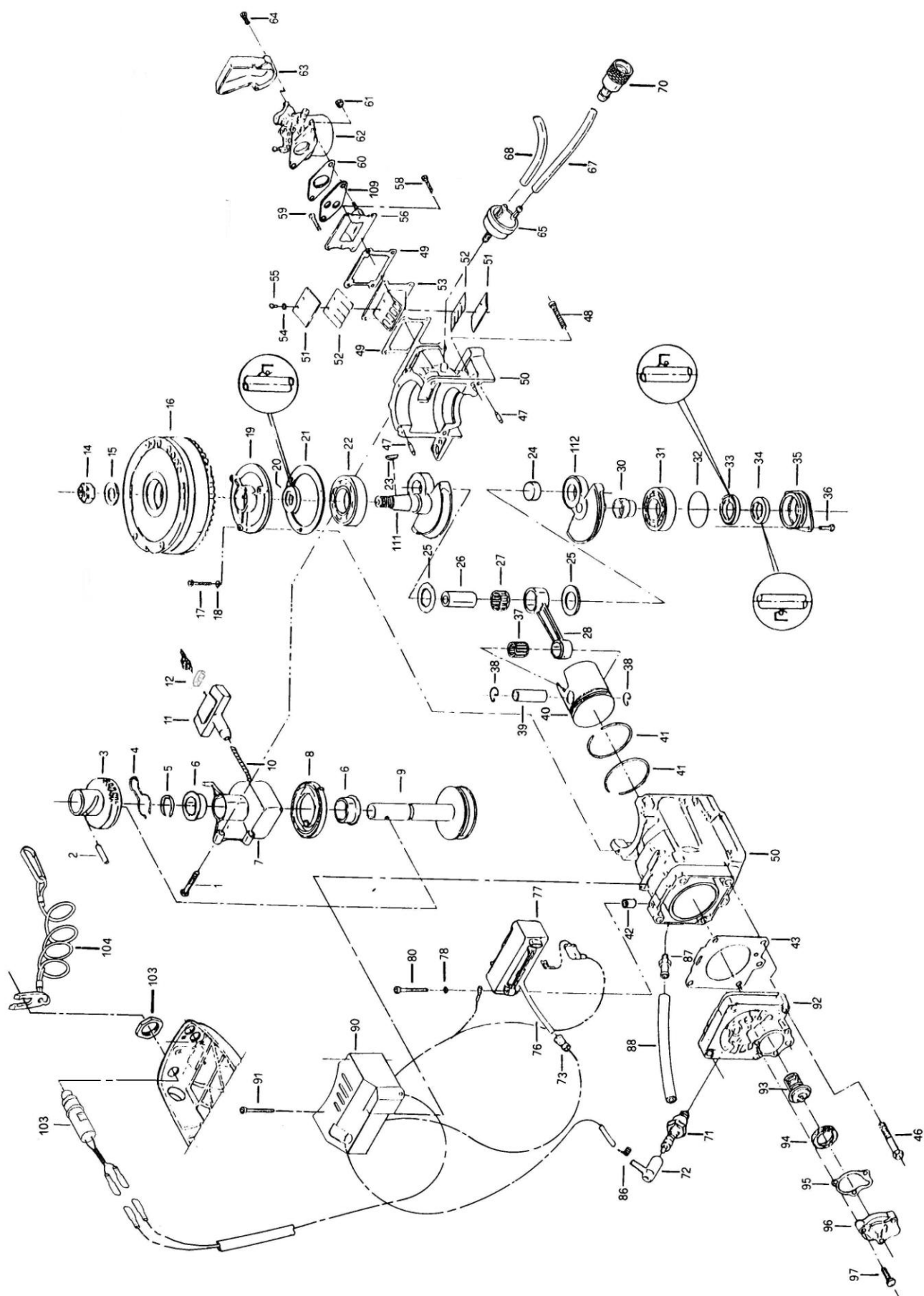


序号	Selva 编码	零部件编码	零部件名称	数量	英文名称
1	4005010	B000700106003570U	螺栓 GB/T 70.1 M6×35-8.8-达克罗	2	Screw
2	5550060	B0087901060028C00	销879.1 (φ 6×28)	1	Roll pin
3	8035060	06104-I07-0000	起动齿	1	Pinion
4	5590250	06106-I07-0000	卡簧	1	Spring
5	5570250	15205-C96-0000	输出轴弹性挡圈 (φ 22×1.8)	1	Retaining ring
6	8030240	11104-C96-0000	卷轴衬套	2	Bushing
7	2070010	06103-I07-0000	卷轴座	1	Cup, starter
8	5590070	06102-I07-0000	起动机弹簧	1	Spring, starter rewind
9	2070290	06101-I07-0000	起动机卷轴	1	Pulley, starter
10	8025110	06105-I07-0000	启动拉绳(φ 5×1250)	1	Rope, starter
11	8020130	06114-C96-0000	起动手把	1	Handle, starter
13	8025240	06117-C96-0000	起动手把盖	1	cover
14	5050520	15312-C96-0000	螺旋桨螺母	1	Lock nut
15	5505010	B0009500140000J00	垫圈 GB 95 14 (飞轮垫圈)	1	Washer
16	2000261	07010-I07-0000	飞轮组合	1	Flyweel
17	4005550	B057830005002570U	螺栓 GB/T 5783 M5×25-8.8-达克罗	3	Screw
19	2045040	02001-I07-0000	上轴承盖	1	Crankcase head, upper
20	3565040	FB02003507FPM	油封(φ 20×φ 35×7)	1	Seal
21	3520020	02002-I07-0000	上轴承盖衬垫	1	Gasket, upper crankcase head
23	5565120	03118-C96-0000	曲轴半圆键 (GB/T 1099.1 3×6.5×16)	1	Key, flyweel
22	3005060	03100-I07-0000	曲轴连杆组件	1	Complete crankshaft
24	7050010				
25	9035010				
26	7580010				
27	3020010				
28	6565010				
30	7035010				
31	3005090				
111	6570732				
112	6570741				
32	3570070	90101-30410000178	O 型密封圈 (φ 41×1.78)	1	O-ring
33	3565050	FB02503507FPM	油封(φ 25×φ 35×7)	1	Seal
34	3560130	FB02003207FPM	油封(φ 20×φ 32×7)	1	Seal
35	2045031	02002-D30-0000	油封壳体 (8HP)	1	Crankcase head, lower

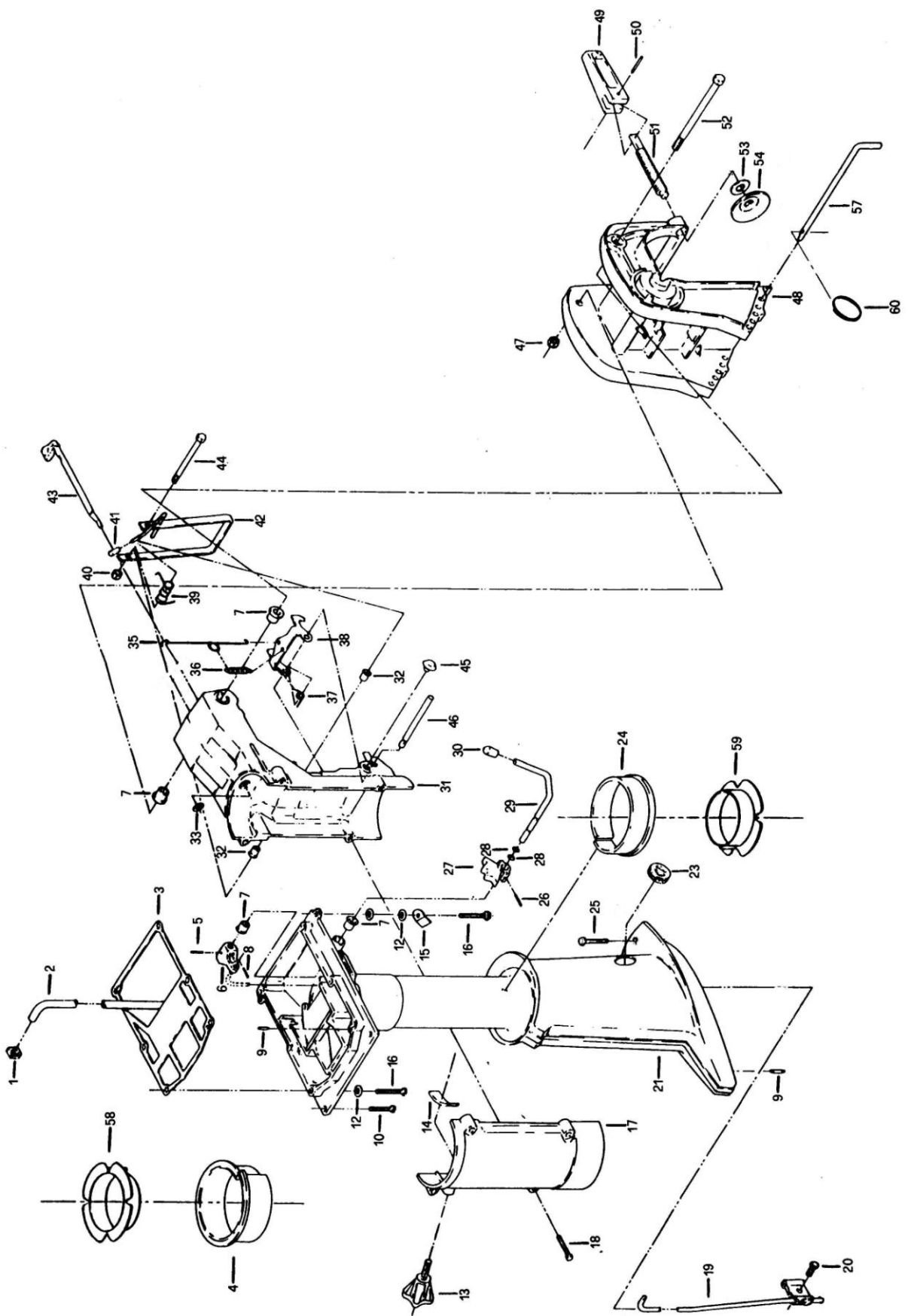


序号	Selva 编码	零部件编码	零部件名称	数量	英文名称
36	4005070	B0578300060016000	螺栓 GB/T 5783 M6×16-A4-70	2	Screw
37	3020100	92102-0000K151920	连杆小头滚针 (φ 15×φ 19×20)	1	Retainer & needle
38	5570340	B008930115000000E	挡圈 GB/T 893.1 15	2	Retaining ring
39	7570021	03002-I07-0000	活塞销	1	Wrist pin
40	7550021	03010-I07-0000	活塞组件	1	Piston
41	7560041	03003-I07-0000	活塞环	2	Piston ring
42	7025020	10101-I07-0200	点火器衬套 φ 5×φ 10×18	3	Spacer
43	3505030	01002-I07-0000	汽缸床	1	Gasket, cylinder head
46	4010510	B057830008004090U	螺栓 GB/T 5783 M8×40-10.9-达克罗	4	Screw M8x40
47	5560510	15004-C96-0000	定位销 (φ 5×18)	2	Parallel pin
48	4015630	B000700106003070U	螺钉 GB/T 70.1 M6×30-8.8-达克罗	4	Screw
49	3535030	05006-I07-0000	簧片阀纸垫	2	Gasket, leaf valve
50	1530372	02120-I07-0000	汽缸体组件	1	Cylinder & c' case
50	1530372	02110-I07-0000	曲轴箱体组件	1	Cylinder & c' case
51	9055090	05010-I07-0000	簧片阀组件	1	Valve
52	9055060				
53	2040030				
55	4011010				
56	1527050	05007-I07-0000	簧片阀盖	1	Manifold
58	4005550	B057830005003070U	螺栓 GB/T 5783 M5×30-8.8-达克罗	2	Screw
59	4005141	B057830005002070U	螺栓 GB/T 5783 M5×20-8.8-达克罗	2	Screw
60	3525120	05004-I07-0000	化油器纸垫	1	Gasket, carburetor
61	5005010	B0617000060000000	螺母 M6	2	Nut
62	7505111	05200-I07-0000	化油器组件	1	Carburetor
63	8080020	05001-I07-0000	进气罩	1	Air silencer
64	4040041	B000700105001670U	螺钉 GB/T 70.1 M5×16-8.8-达克罗	2	Screw
65	1528010	05300-D05-0000	油泵组件	1	Fuel pump
67	685040			1	Tappo
68	685040	05008-I07-0000	油泵-化油器间油管 (φ 4.5×10×210)	1	Fuel hose (*)
70	8065082	05610-C96-0000	接机端燃油接头	1	Female fuel connector (**)
71	8570010	10400-D05-0000	火花塞	1	Spark plug
72	8060090	10100-I07-0000	点火器组合	1	Ignition starting system
73	8060280				
76	8585010				
77	8505060				

81	1572013			
86	5590270			

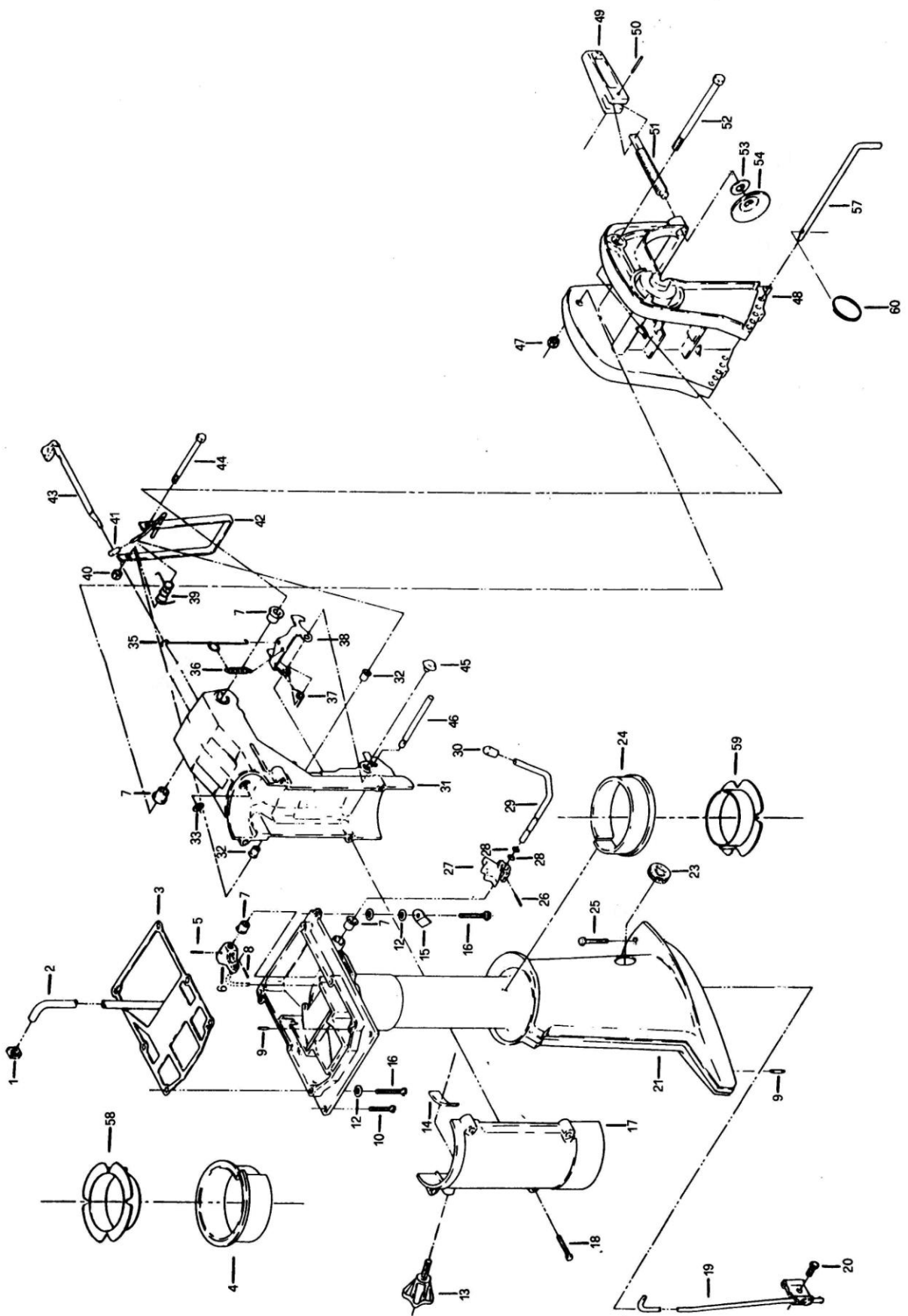


[illegible]



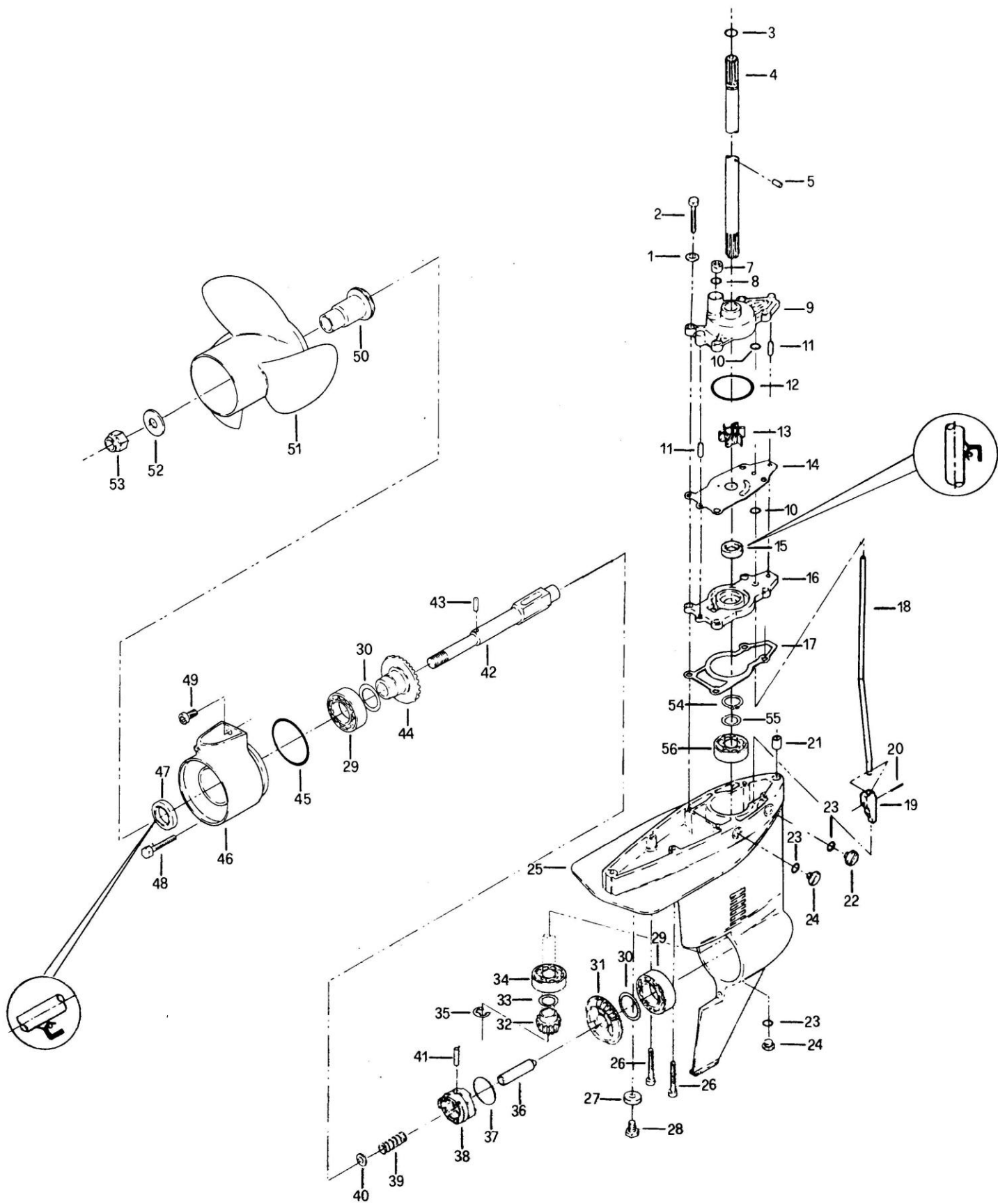
序号	Selva 编码	零部件编码	零部件名称	数量	英文名称
1	8045080	15409-H58-0000	水管固定橡胶块	1	Grommet, water tube
2	6580060	15408-H58-0000	水管（标准轴）	1	Water tube, standard
2	6580050	15408-H58-0100	水管（长轴）	1	Water tube, long
3	3530215	09009-D30-0000	底罩水下垫片	1	Gasket cyl. to exhaust housing
4	8045035	14005-H58-0000	减震护套（上）	1	Vibration dampener, upper
5	5555020	B0087901030018C00	销 GB/T 879.1 3×18	1	Roll pin
6	8015090	13024-C96-0000	油门联动块	1	Bellcrank, shift rod
7	8030120	13017-C96-0000	油门杆衬套	4	Bushing
8	5580030	B0087904020020C00	销 GB/T 879.4 2×20-C	1	Cotter pin
9	5560510	15004-C96-0000	定位销（ ϕ 5×18）	3	Parallel pin
10	4005110	B0578300060020000	螺栓 GB/T 5783 M6×20-A4-70	3	Screw
13	8020080	11001-H58-0000	调节螺丝手柄	1	Knob, friction
14	9005270	11002-H58-0000	阻尼块	1	Plate, friction
15	9005250	13008-I07-0000	变档限位挡块	1	Retainer, shift lever
16	4005010	B0578300060025000	螺栓 GB/T 5783 M6×25-A4-70	1	Screw
17	2075040	14007-H58-0000	旋转支架盖	1	Cover, swivel bracket
18	4005010	B0578300060030000	螺栓 GB/T 5783 M6×30-A4-70	4	Screw
19	1598430	15301-H58-0000	变档上拉杆（标准轴）	1	Shift rod, upper standard
19	1598420	15301-H58-0100	变档上拉杆（长轴）		Shift rod, upper long
20	4005091	B0578900060020000	螺钉 GB/T 5789 M6×20-A4-70	1	Screw
21		14001-I07-0000	水上壳体	1	Upper unit
21		14001-I07-0100	水上壳体		lower unit
23	8000075	14002-H58-0000	水上壳体橡胶堵头	1	Plug, exhaust housing
24	8045045	14006-H58-0000	减震护套（下）	1	Vibration dampener lower
25	4010080	B0578300060055000	螺栓 GB/T 5783 M6×55-A4-70	1	Screw
26	5555020	B0087901030018C00	销 GB/T 879.1 3×18	1	Roll pin
27	2510230	13110-I07-0000	变档限位块	1	Gear selector
28	3570080	90101-10044700178	O 形圈4.47×1.78	2	O-ring
29	6540010	13103-I07-0000	换挡杆	1	Shift lever
30	8020070	13104-I07-0000	换挡杆手柄	1	Knob, shift lever
31	2075030	11003-H58-0000	旋转支架	1	Swivel bracket
32	8030100	06205-D05-0000	起动拉绳导向管衬套	2	Bushing
33	5570350	11004-H58-0000	偏心转轴垫圈	1	Retaining ring
35	5590090	11010-H58-0000	倒档拉钩弹簧	1	Rod. reverse lock
36	5590570	11009-H58-0000	倒档锁定弹簧	1	Spring, reverse lock rod
37	5590100	11007-H58-0000	弹簧加载钩	1	Spring, locking lever
38	9050010	11008-H58-0000	倒档拉钩	1	Locking lever
39	5590110	11011-H58-0000	扭簧	1	Spring, tilting lever
40	5050010	B0088901060000600	螺母 GB/T 889.1 M6-A4-70	1	Lock nut
41	8020090	11012-H58-0000	位置调节手柄	1	Knob, tilting lever

42	1598441	11013-H58-0000	位置调节支撑组件	1	Tilting lever
----	---------	----------------	----------	---	---------------



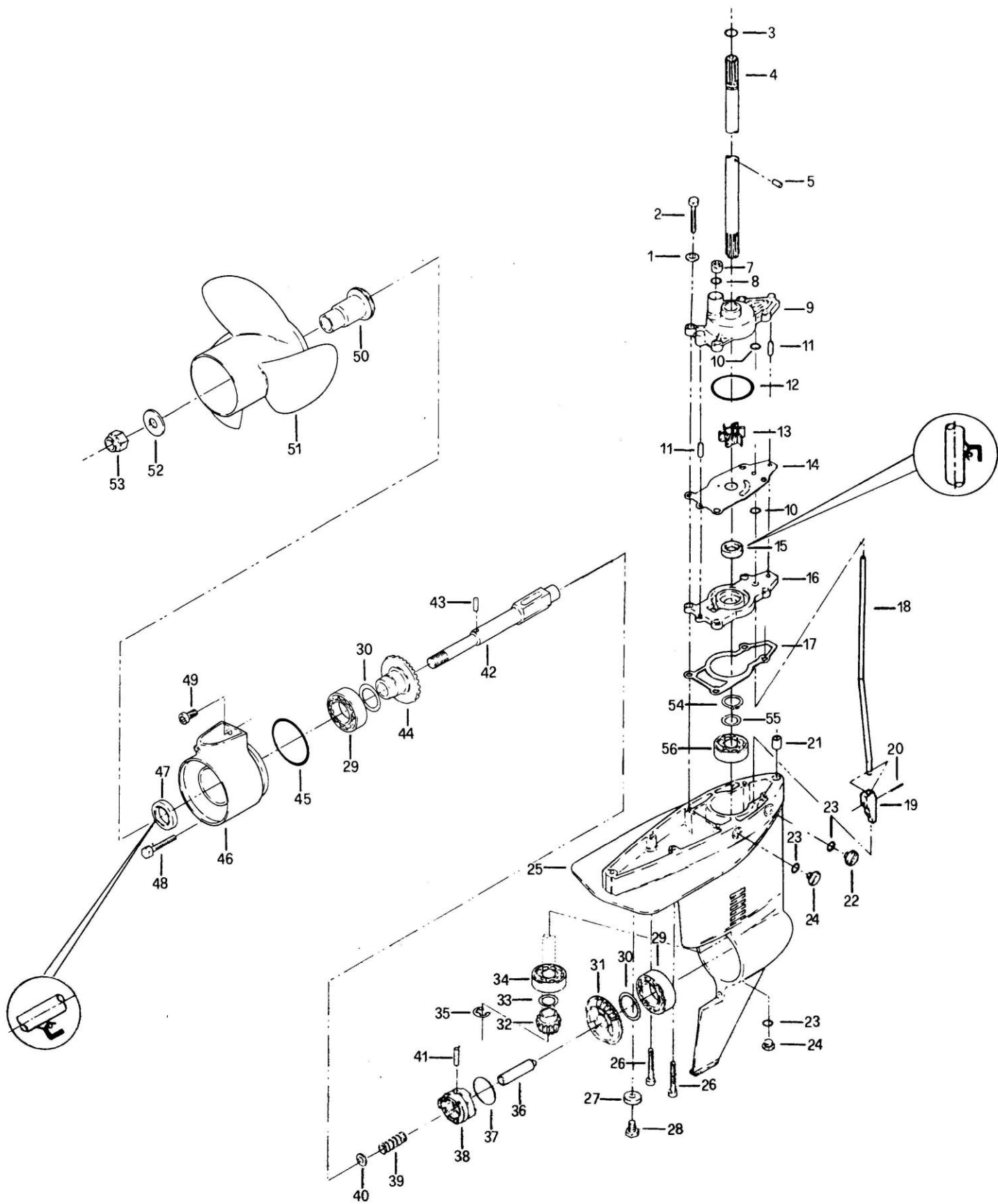
[illegible]

--	--	--	--	--	--



序号	Selva 编码	零部件编码	零部件名称	数量	英文名称
1	5505080	B0009500060000J00	平垫圈 (φ 6)	4	Washer
2	4005160	B0578300060035000	螺钉 GB/T 5783 M6×35-A4-70	4	Screw
3	3570030	90101-10076500178	O 形圈7.65×1.78	1	O-ring
4	6520510	15101--I07-0000	驱动轴	1	Driveshaft, standard
4	6520520	15101--I07-0100	驱动轴 (长轴)	1	Driveshaft, long
5	5560010	15407-H58-0000	水泵转子销	1	Parallel pin
7	7030040	15401C-H58-0000	出水管衬套	1	Grommet, water tube
8	3570030	90101-10076500178	O 形圈7.65×1.78	1	O-ring
9	1560140	15401-H58-0000	水泵上盖组件	1	Impeller housing
10	3570080	90101-10044700178	O 形圈 φ 4.47×1.78	2	O-ring
11	5560020	15402-H58-0000	水泵上盖定位销 φ 4×14	2	Parallel pin Ø 4x14
12	3570070	90101-10410000178	O 形圈 φ 41×1.78	1	O-ring
13	8095010	15403-H58-0000	水泵转子	1	Impeller, water pump
14	9005280	15404-H58-0000	水泵转子衬板	1	Plate, impeller housing
15	3555050	FB01202207FPM	油封 TC12×22×7	1	Seal
16	8025611	15405-H58-0000	水泵下盖	1	Gearcase cover
17	3540030	15406-H58-0000	水泵密封纸垫	1	Gasket
18	6530040	15302-H58-0000	变档下拉杆	1	Shift rod, lower
19	7080260	15303-H58-0000	拨叉	1	Shift cam
20	5550090	B0087901030018C00	销 GB/T 879.1 3×18	1	Roll pin
21	7030030	15003-H58-0000	空心定位销10×14×7	1	Dowell bushing
22	7005220	15006-C96-0000	冲洗塞	1	Oil plug
23	3570160	90101-10067500178	O 形圈6.75×1.78	3	O-ring
24	7005210	15005-C96-0000	油塞	2	Plug
25	2090175	15001-H58-0000	水下壳体	1	Gearcase
26	4015060	B0007001060035000	螺钉 GB/T 70.1 M6×35-A4-70	2	Screw
27	2504030	15002-H58-0100	牺牲阳极	1	Anode
28	4030026	B0578300060018000	螺栓 GB/T 5783 M6×18-A2-70	1	Screw TSPEI M6x16
29	3005030	92102-000007005C	轴承25×47×12	2	Bearing
30	9030340	15205-H58-0000	调整垫片	2	Shim
31	1598070	15210-H58-0000	前进档齿轮	1	Gear & bushing, forward
32	6005230	15102-H58-0000	主动齿	1	Pinion
33	9030040	15103-H58-0000	主动齿调整垫片	1	Shim
34	3005010	92102-000007201C	轴承12×32×10	1	Bearing
35	5570380	B0089600050000000	挡圈 GB/T 896 5-SUS304	1	Retaining ring
36	7010060	15241-H58-0000	离合器销	1	Plunger
37	5590130	15242-H58-0000	离合器卡簧	1	Retainer, clutch dog
38	6020010	15243-H58-0000	离合器	1	Shifter, clutch dog
39	5590125	15244-H58-0000	离合器压簧	1	Spring, shifter
40	5505070	B0009500050000J00	垫圈 GB/T 95 5-A4	1	Washer
41	7010050	15245-H58-0000	离合器档位销	1	Pin
42	6510045	15201-H58-0000	输出轴	1	Propeller shaft
43	7010080	15233-H58-0000	螺旋桨固定销 φ 6×22	1	Drive pin, propeller

44	1598060	15220-H58-0000	倒档齿轮	1	Gear & bushing, reverse
45	3570060	90101-10520700262	O 形圈52.07×2.62	1	O-ring



[illegible]

--	--	--	--	--	--